

HODDE

REAL ESTATE CO.

Office 979-836-8532

112 West Main St.

Brenham, TX 77833

HREC # 4219

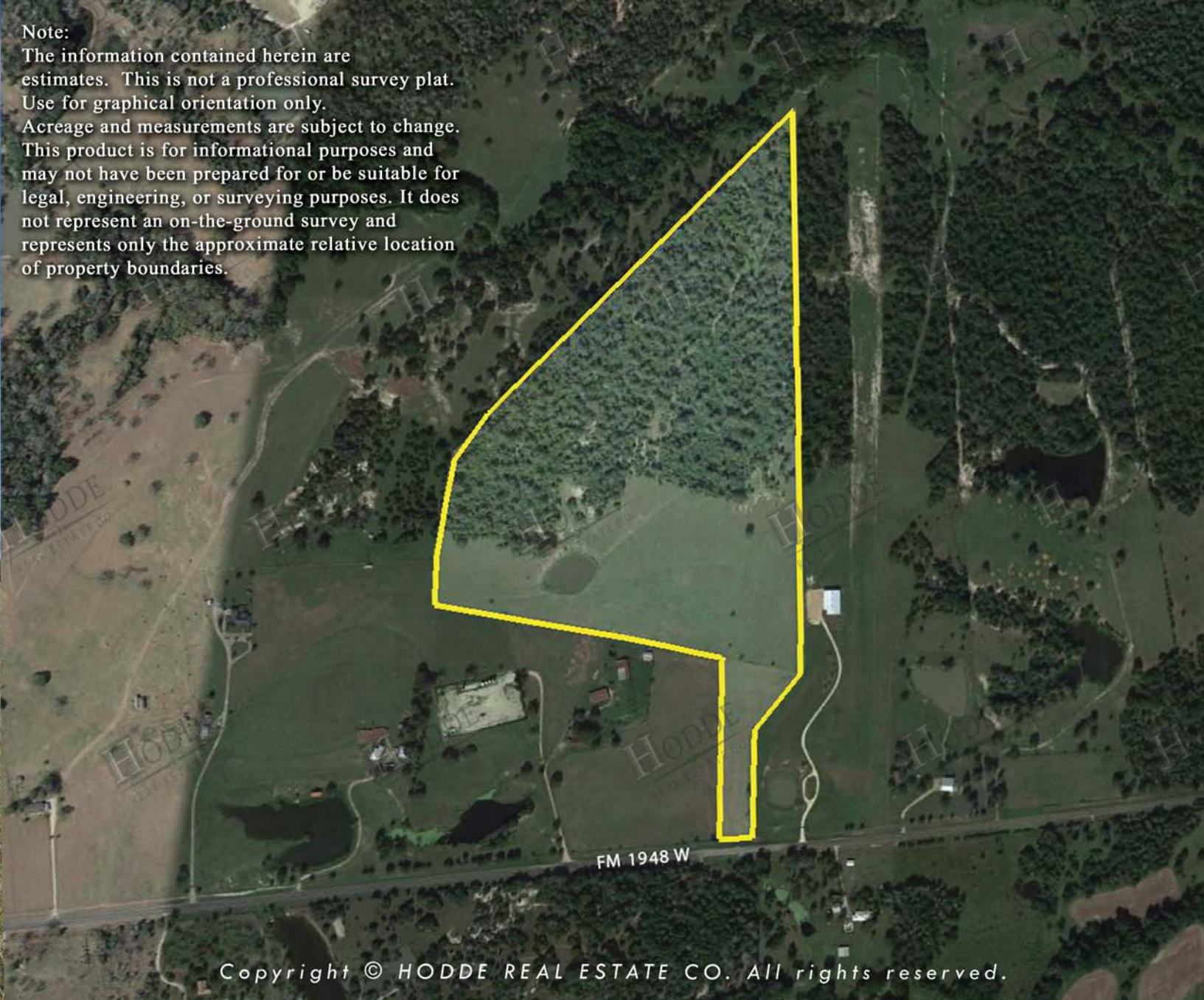
ACREAGE
APPROX. 58.75 AC.



FIVE STAR FARM

WASHINGTON COUNTY, TEXAS

WWW.HODDERE.COM



Note:
The information contained herein are estimates. This is not a professional survey plat. Use for graphical orientation only. Acreage and measurements are subject to change. This product is for informational purposes and may not have been prepared for or be suitable for legal, engineering, or surveying purposes. It does not represent an on-the-ground survey and represents only the approximate relative location of property boundaries.

Copyright © HODDE REAL ESTATE CO. All rights reserved.

Beautiful rolling terrain with high homesite. Partially wooded areas, pond and mature scattered trees. This property offers a private home site off the road and abundant wildlife. The ideal location for a peaceful weekend retreat or for your permanent residence. Fenced, ag-exemption in place (could also be transferred to wildlife exemption if preferred), paved road frontage, no flood plain, electric & community water available. Conveniently situated just minutes from Lake Somerville.

ASKING PRICE: \$495,000

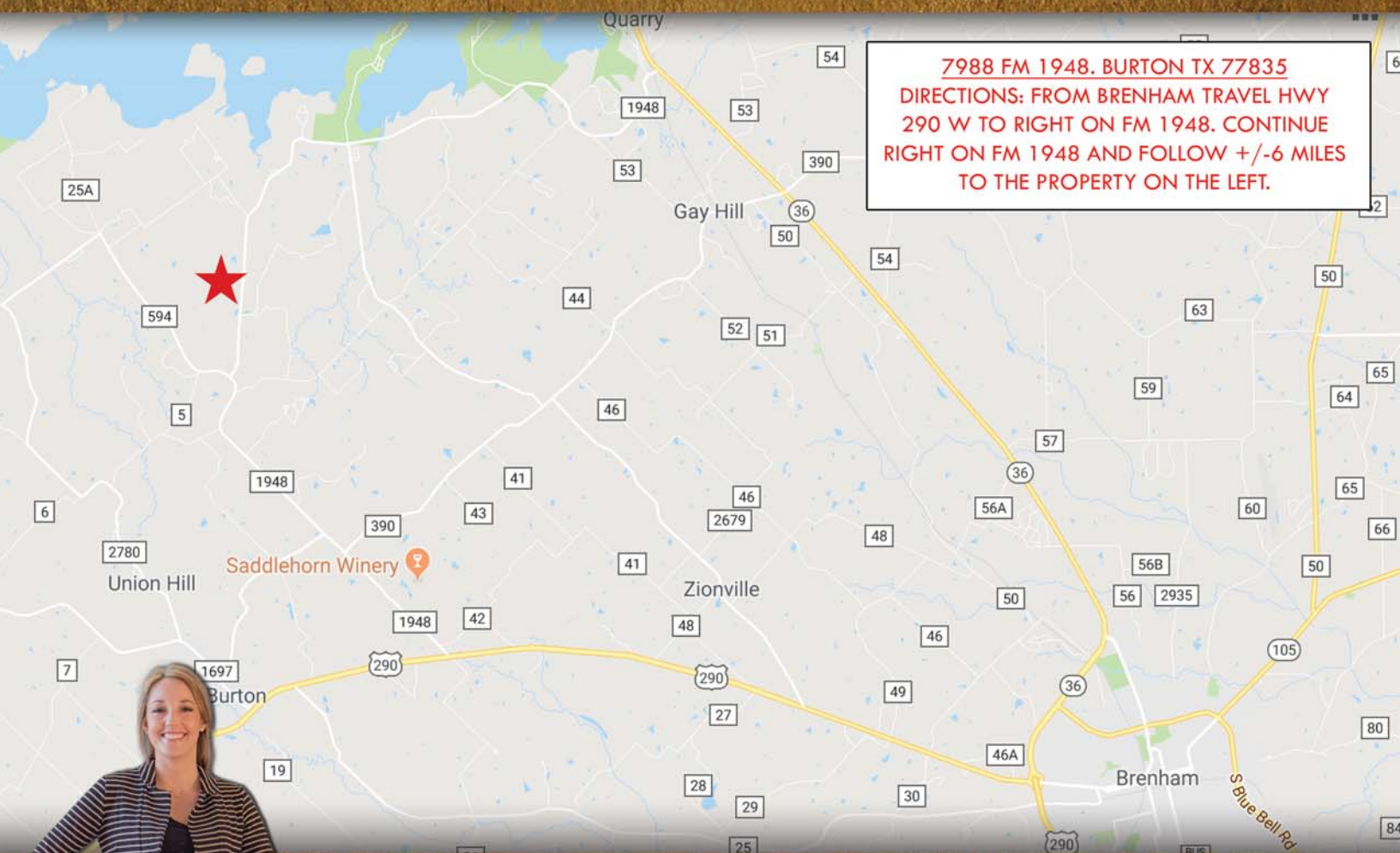


7988 FM 1948 W.
BURTON, TX 77835

- 🌟 WASHINGTON COUNTY
- 🌟 BURTON ISD
- 🌟 ACREAGE: ±58.75 AC.
- 🌟 EST. TAXES: \$94.52 (AG-EXEMPTION)

- 🌟 EXCLUSIONS: NONE
- 🌟 RESTRICTIONS: LIGHTLY RESTRICTED
- 🌟 EASEMENTS: BLUEBONET ELEC.
- 🌟 MINERALS: NEGOTIABLE

- 🌟 PAVED FM ROAD
- 🌟 ROLLING TERRAIN& POND
- 🌟 PERIMETER & CROSS FENCED
- 🌟 ELECTRIC ON PROPERTY



7988 FM 1948. BURTON TX 77835
DIRECTIONS: FROM BRENHAM TRAVEL HWY 290 W TO RIGHT ON FM 1948. CONTINUE RIGHT ON FM 1948 AND FOLLOW +/-6 MILES TO THE PROPERTY ON THE LEFT.



HODDE

REAL ESTATE CO.

Tiffany Abrams

979.251.4036

The information contained herein has been obtained from sources that Hodde Real Estate deem reliable; however, cannot guarantee its accuracy. Property is subject to prior sale or withdrawal from the market.

